



WE ARE THE ONES WHO OPEN DOORS OF UNIVERSITIES, STORES, HOSPITALS, AND BUILDINGS, THAT SHIFTED FROM PLACES TO ICONS. WE ARE THE ONES WHO “EVEN A PULL TELLS WHO WE ARE, SO LET’S DO IT EVEN BETTER”; THOSE WHO “SUSTAINABILITY IS CONSISTENCY UNVEILING IN THE LONG TERM, SO LET’S PAY ATTENTION NOW”. WE ARE THE ONES WHO TEAM UP WITH THE BEST PARTNERS, AND THOSE WHERE WOMEN ARE LEADERS. WE ARE THE ONES WHO EMBELLISH THE FUNCTION OF A GRAB BAR IN A BATHROOM, OF A DRAWER PULL. STRONG AS STEEL, CONSTANTLY-CHANGING AS COPPER. WE ARE THE ONES WHO LET YOU IN AND OUT, GO, STAY AND COME BACK. WE ARE THE ONES WHO NEVER MAKE JUST FOR THE SAKE OF MAKING, BUT ALWAYS MOVED BY THE AMBITION OF CREATING “GOOD” OBJECTS FOR ALL.



NYCXDESIGN AWARDS
FINALIST



EUROPEAN PRODUCT DESIGN AWARD
WINNER



EUROPEAN PRODUCT DESIGN AWARD
HONORABLE MENTION



GLOBAL FUTURE DESIGN AWARDS
WINNER



NYCXDESIGN AWARDS
FINALIST



#METROPOLISLIKES NYCXDESIGN
WINNER



GLOBAL FUTURE DESIGN AWARDS
THIRD AWARD



IDEA INTERNATIONAL DESIGN
EXCELLENCE AWARDS
FINALIST



V ADI CERAMICS & BATHROOM
DESIGN AWARD
SPECIAL MENTION



XXIII COMPASSO D'ORO AWARD
NOMINATION



REDDOT DESIGN AWARD
WINNER



reddot design award

REDDOT DESIGN AWARD
NOMINATION



reddot design award

XXI COMPASSO D'ORO AWARD
NOMINATION



pba FOR LEED® CERTIFICATION

OUR CONTRIBUTION TO THE EFFICIENCY AND SUSTAINABILITY OF BUILDINGS

LEED® (LEADERSHIP IN ENERGY ENVIRONMENTAL DESIGN) IS A VOLUNTARY CERTIFICATION SYSTEM FOR THE MANAGEMENT, DESIGN AND CONSTRUCTION OF BUILDINGS THAT ARE SUSTAINABLE FROM A SOCIAL, ENVIRONMENTAL AND ECONOMIC POINT OF VIEW AND IN TERMS OF THE WELLBEING OF THE USERS.

pba PRODUCTS CONTRIBUTE TOWARD SATISFYING PREREQUISITES AND CREDITS UNDER LEED®.

INTEGRATED PROCESS	IP	
MATERIALS AND RESOURCES	MR	
INDOOR ENVIRONMENTAL QUALITY	EQ	
INNOVATION	IN	



DECLARE LABEL

OUR DECLARE "RED LIST FREE" PRODUCTS FOR SUSTAINABLE BUILDINGS

THE **DECLARE LABEL** LISTS THE MATERIALS IN A PRODUCT TO DISCLOSE WHAT THEY ARE MADE OF, WHERE THEY ARE PRODUCED AND HOW THEY WILL BE DISPOSED OF. THIS LABEL IS A CALL FOR RESPONSIBILITY TO PRODUCERS AND USERS ALIKE.

THE **DECLARE LABEL** IS A GUIDE TO SELECT PRODUCTS, PROVIDES INFORMATION IN A SIMPLE AND TRANSPARENT WAY AND RISES ABOVE GREENWASHING.

DECLARE TAKES COMPLEX CHEMICAL ANALYSIS AND RAW MATERIAL SOURCE LOCATION INFORMATION TO ESTABLISH THAT PRODUCTS ARE FREE FROM HAZARDOUS CHEMICALS. ALL DECLARE LABEL OF pba PRODUCTS ARE **RED LIST FREE**.

INCLUSION

INCLUSIVENESS IS FOR EVERYONE, IT DOES NOT IDENTIFY A SPECIFIC SKILL, IT DOES NOT SEEK SOLUTIONS THAT FLATTEN NEEDS IN A VISION OF “COMMON NECESSITY”, ON THE CONTRARY IT VALUES THE BEAUTY, THE VARIETY AND THE UNIQUENESS OF PEOPLE. ONLY UNIVERSAL VALUES CAN LAY THE FOUNDATION OF SUCH AN AMBITIOUS BUILDING: INCLUSIVENESS, BEAUTY FOR ALL, RESPONSIBILITY FOR THE CHOICES MADE ON WHAT, WITH WHOM AND HOW, AND SUSTAINABILITY. BECAUSE WE CANNOT AVOID TO BE SUSTAINABLE IF WE TRULY BELIEVE IN THE “FOR ALL”.

7 PRINCIPLES OF UNIVERSAL DESIGN



01
EQUITABLE
USE

THE DESIGN IS USEFUL AND MARKETABLE TO PEOPLE WITH DIVERSE ABILITIES.



02
FLEXIBILITY
IN USE

THE DESIGN ACCOMMODATES A WIDE RANGE OF INDIVIDUAL PREFERENCES AND ABILITIES.



03
SIMPLE AND
INTUITIVE USE

USE OF THE DESIGN IS EASY TO UNDERSTAND, REGARDLESS OF THE USER’S EXPERIENCE, KNOWLEDGE, LANGUAGE SKILLS, OR CURRENT CONCENTRATION LEVEL.



04
PERCEPTIBLE
INFORMATION

THE DESIGN COMMUNICATES NECESSARY INFORMATION EFFECTIVELY TO THE USER, REGARDLESS OF AMBIENT CONDITIONS OR THE USER’S SENSORY ABILITIES.



05
TOLERANCE
FOR ERROR

THE DESIGN MINIMIZES HAZARDS AND THE ADVERSE CONSEQUENCES OF ACCIDENTAL OR UNINTENDED ACTIONS.



06
LOW PHYSICAL
EFFORT

THE DESIGN CAN BE USED EFFICIENTLY AND COMFORTABLY AND WITH A MINIMUM OF FATIGUE. LESS THAN 5 POUNDS.



07
SIZE AND SPACE FOR
APPROACH AND USE

APPROPRIATE SIZE AND SPACE IS PROVIDED FOR APPROACH, REACH, MANIPULATION, AND USE, REGARDLESS OF USER’S BODY SIZE, POSTURE, OR MOBILITY.



DOOR HARDWARE



MILLWORK PULLS



BATHROOM DESIGN FOR ALL



BATHROOM ACCESSORIES AND HANDRAIL



OFFICE



HOSPITALITY



HEALTHCARE



PUBLIC SPACES



MIXED USED



RESIDENTIAL



- 1 HOSPITAL
- 2 RESIDENCE
- 3 SPORTS COURT
- 4 AIRPORT
- 5 TRAIN STATION
- 6 MALL
- 7 REST HOME
- 8 EXHIBITION CENTER
- 9 OFFICE BUILDING
- 10 HOTEL
- 11 SPA & WELLNESS CENTRE
- 12 STADIUM
- 13 SWIMMING POOL
- 14 VILLAS
- 15 BANK
- 16 UNIVERSITY
- 17 CAMPUS
- 18 LIBRARY
- 19 MUSEUM
- 20 AUDITORIUM
- 21 CONCERT HALL



PULLS

LEVERS
& LOCKS



LOCKING
LADDER PULLS

TOCCO COLLECTION
SENSORY SENSITIVE
HARDWARE



SINGLE-MOTION
SAFE EGRESS PULL

LOCKSETS FOR
GLASS DOOR





HANDS-FREE
PULLS

DESIGN
FOR ALL



INTEGRATED
DOOR PULLS

BATHROOM
ACCESSORIES



CABINET &
MILLWORK HARDWARE

HANDRAIL





DOOR HARDWARE



Vera Wang San Francisco US

Vera Wang
Rolex
Avon
Mercedes Benz
Giorgio Armani
Gucci Group
Missoni
Les Carmes Haut
Autogrill
Pepsi

San Francisco
Geneve
New York
Roma
Hong Kong
Novara
Paris
Brion
Milano
Purchase



PULLS

Courtesy of STUDIOS Architecture, Photography by Eric Laignel



Sony Headquarters New York US

Sony Headquarters
McLaren Technology Centre
Pirelli Headquarter
Square Space
Heidelberg Technology Park
Hewlett Packard European Headquarter
BNL
Royal Bank Of Scotland
Cantine Antinori
Gensler Office

New York
Woking
Milano
New York
Heidelberg
Dublin
Roma
Los Angeles
Firenze
Abu Dhabi



LOCKING LADDER PULLS



Campus EDF Saclay France

Campus EDF
Yacht Club de Monaco Marina
Haus Augarten
CAA Creative Artists Agency
Campus Kiel
Pflegeheim Forum der Senioren
Klinikum Berlin-Buch
Ben Gurion Airport
Universitätsklinikum Wuppertal
Cambridge University

Saclay
Montecarlo
Wien
New York
Lübeck
Vierenheim
Berlin
Tel Aviv
Wuppertal
New York

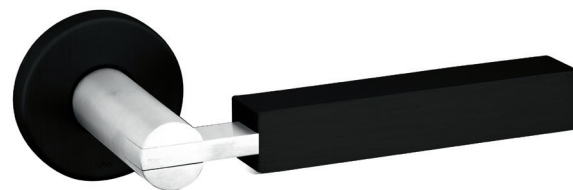


ADA

SINGLE-MOTION SAFE EGRESS PULL



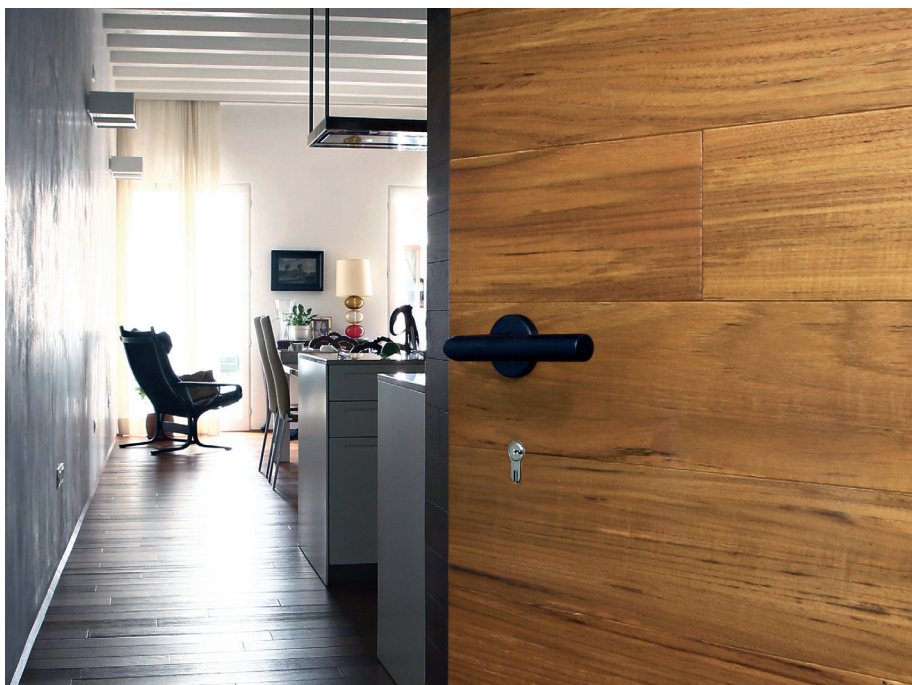
Fondazione Prada Milano Italy



Fondazione Prada
Shanghai Disable Centre
Torre Isozaki
Aéroport Charles De Gaulle
Lega Del Filo d'Oro
Torre Galfa
Auditorio De Tenerife
Reggia di Venaria Reale
Sede Social Sanitas
Expo 2015

Milano
Shanghai
Milano
Paris
Osimo
Milano
Tenerife
Torino
Madrid
Milano

LEVERS



Private House Vicenza Italy



Private House
CityLife
Private Yacht
Attic
Studio Personal Trainer
Private Apartment
Luxury Residence
Casa-Studio
Penthouse
Chalet

Vicenza
Milano
Portofino
Los Angeles
Bassano del Grappa
New York
Venezia
Firenze
Amsterdam
Cortina

LEVERS AND PULLS



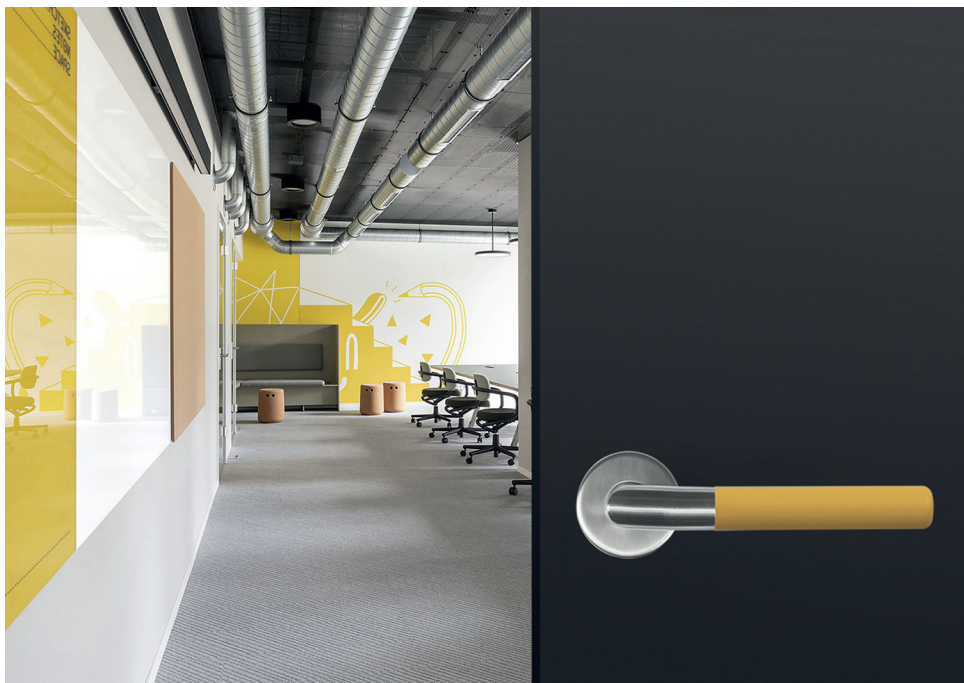
SQ Space Headquarters New York US



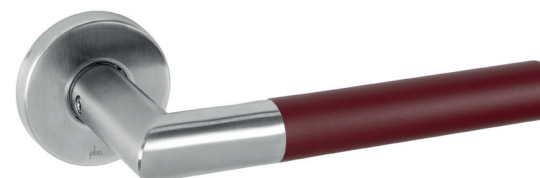
SQ Space Headquarters
Hart Showroom
Haworth Showroom
U-Bora Towers
Gemological Institute Of America
The Village
Rothschild
PTC
4A's
Cartier

New York
Houston
New York
Dubai
New York
Lione
New York
Boston
New York
Madrid

LOCKSET FOR GLASS DOOR



Conference Room Milano Italy



Osservatorio Fondazione Prada	Milano
Altaplaza Mall	Ciudad de Panamá
Cité Internationale de la Langue Française	Paris
Nuovo Campus Bologna Business School	Bologna
Ever Green Tower	Tirana
Arena di Verona	Verona
Wo Hop Shek Crematorium	Hong Kong
Louis Vuitton Boutique	Milano
UKSH Campus Kiel	Kiel
Centro Nazionale della Fondazione Lega del Filo d'Oro	Osimo

TOCCO COLLECTION SENSORY SENSITIVE HARDWARE



SPA Center New York US



La Hacienda Alcaidesa Links Golf Resort
Carl Friedrich Flemming Klinik
City of Dreams Mediterranean
Radisson Blu Hotel
Hotel Hyatt Regency
Hotel Sheraton Orano
The Residences Mandarin Oriental Mayfair
Illy Café
Hotel Palazzo Tirso
Bulgari Hotel

Cádiz
Schwerin
Limassol
Durban Umhlanga
Saint Julian
Orano
London
Milano
Cagliari
Roma

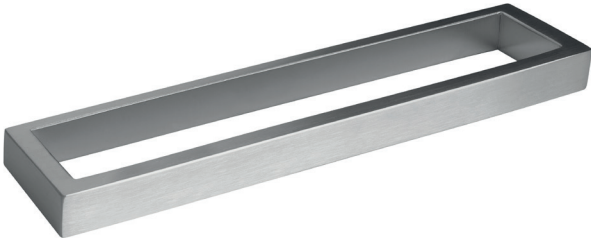


MILLWORK PULLS

ADA



Morning Consultant Headquarters New York US



Tik Tok
Walker & Dunlop Headquarters
Arapiles 13
Morning Consult Headquarters
Black Office
San Pellegrino Flagship Factory
Google St. John's Terminal
The Spiral
Stream Building
HIS new tech

Los Angeles
Bethesda
Madrid
Washington
Clichy
San Pellegrino Terme
New York
New York
Paris
Brussels

CABINET & MILLWORK HARDWARE



BATHROOM DESIGN FOR ALL

ADA



Ospedale Dell'Angelo Mestre Italy



- | | |
|-------------------------------|-----------|
| Ospedale Dell'Angelo | Mestre |
| National University Hospital | Singapore |
| Ospedale Unico Alto Vicentino | Santorso |
| Ospedale Civile Maggiore | Verona |
| Centre Hospitalier De Roubaix | Roubaix |
| Ospedale San Bartolomeo | Trento |
| Ospedale Niguarda | Milano |
| Sunnybrook Hospital | Toronto |
| Ospedale Di Gorizia | Gorizia |
| Ospedale Di Padova | Padova |



GRAB BARS

ADA



Luxury Hotel Vicenza Italy



Hotel Mandarin Oriental
Hotel Port Palace
La Rosina Hotel
Hotel Norman
Hotel Excelsior Gallia
Conservatorium Hotel
Hotel Montemartini
Hotel Missoni
Hotel Le Meridien
Hotel Le Sereno

Milano
Montecarlo
Vicenza
Tel Aviv
Milano
Amsterdam
Roma
Edimburgo
Barcelona
Como

DFA
DESIGN.
FOR ALL


SEATS

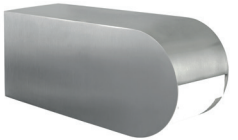


BATHROOM ACCESSORIES AND HANDRAIL

ADA



VIP Lounge Private Company Los Angeles US



The Museum of Modern Art MoMA
Grande Arche, La Défense
Viola Park
Portal La Dehesa Mall
Hotel Palazzo Tirso
Klinikum Stuttgart
Hav Centre Socioculturel et Sportif Danton
Cittadella della Salute
Centre Aquatique de Carvin
Larvotto Regeneration Project

New York
Paris
Firenze
Lo Barnechea
Cagliari
Stuttgart
Havre
Pordenone
Carvin
Monaco



BATHROOM ACCESSORIES



MAXXI Roma Italy



Nuovo campus Architettura Politecnico
ADP Aéroports de Paris
Helios Amper-Klinikum
Scuola Gabelli
IULM
Linkedin Headquarter
PGA Golf Hilton Hotel
Hotel Ritz-Carlton Los Cabos
Ospedale Sant'Anna
Solar Carve, Aquarian Holdings & RTW

Milano
Paris
Dachau
Belluno
Dubai
Milano
Madrid
San José del Cabo
Como
New York

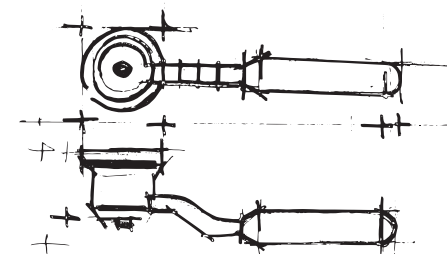
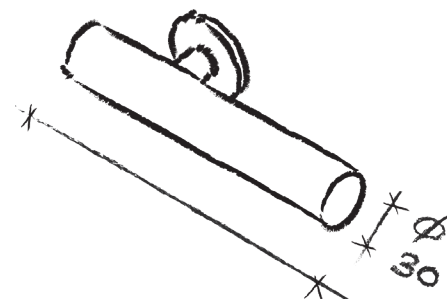
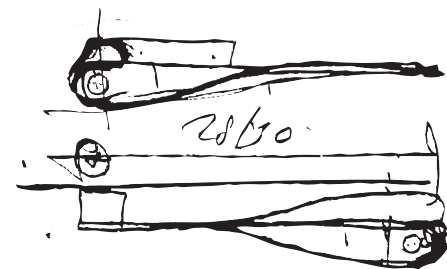
DFA
DESIGN.
FOR ALL
♿️

HANDRAIL



Les Dunes Paris France

pba collaborates with the major architectural firms with a global presence to design new products with the goal to both expand the hardware and bathware offer, and to open new business with innovative products that integrate technical solutions with aesthetical and functional solutions.



MATERIALS, FINISHING AND DETAILS

STAINLESS STEEL

PBA IS THE PREMIER BRAND OF AISI 316L STAINLESS STEEL, THE HARDEST, MOST RESISTANT AND ELASTIC STEEL. THE STAINLESS STEEL AISI 316L IS AN AUSTENITIC ALLOY. IT IS DISTINGUISHED FROM OTHERS INOXIDIZABLE STEELS BY THE HIGH PERCENTAGE OF MOLYBDENUM WHICH GIVES IT A SPECIAL RESISTANCE: TO PITTING CORROSION AND STRESS CORROSION. IN THIS KIND STAINLESS STEEL THE NICKEL'S PRESENCE IS INCREASED IN ORDER TO GUARANTEE STABILITY. FURTHER, THE "L" STAYS FOR LOW CARBON AND IN FACT THE QUANTITY IS LESS OR EQUAL TO 0,03%.



ALUMINIUM

PBA USES ALUMINIUM ALLOY 6060, A MEDIUM STRENGTH HEAT TREATABLE ALLOY WITH A STRENGTH SLIGHTLY LOWER THAN 6005A. IT HAS VERY GOOD CORROSION RESISTANCE, VERY GOOD WELDABILITY AND GOOD COLD FORMABILITY. IT IS COMMONLY USED FOR COMPLEX CROSS SECTIONS AND HAS VERY GOOD ANODIZING RESPONSE. ALLOY: EN-AW 6060. FORMS: EXTRUDED ROUND ROD/BAR. CHARACTERISTICS-PROPERTIES: VERY GOOD CORROSION RESISTANCE, MEDIUM STRENGTH, COMPLEX SECTIONS, ANODISING QUALITY. APPLICATIONS: ARCHITECTURAL SECTIONS, FRAMES, LIGHTINGS, RAILLING, LADDERS, FURNITURE, FENCES, FLOORING.



NYLON POLIAMIDE 6

THERMOPLASTIC RESIN (POLYAMIDE 6). HIGH MECHANICAL RESISTANCE. TENACITY. RESISTANCE TO WEAR AND ABRASION. ANTISTATIC, WITH GOOD INSULATING POWER AND GOOD RESISTANCE TO CREEPING CURRENTS. GOOD STABILITY TO CHEMICAL AGENTS SUCH AS HYDROCARBONS, OILS AND FATS; GOOD RESISTANCE TO NUMEROUS CHEMICAL AGENTS SUCH AS SOLVENTS, DETERGENTS AND DISINFECTANTS. POOR THERMAL CONDUCTION. CLASSIFIED AS SELF-EXTINGUISHABLE INTO CATEGORY UL 94V-2. IT DOES NOT GENERATE TOXIC GASES. PHYSIOLOGICALLY INNOCUOUS. COMPLIANCE WITH THE REQUIREMENTS OF DIRECTIVE 2011/65/EU. IT IS ALSO FREE OF LEAD (PB), MERCURY (HG), HEXAVALENT CHROMIUM (CR+6), POLYBROMINATED BIPHENYLS (PBB), POLYBROMINATED DIPHENYL ETHERS (PBDE) AND CADMIUM (CD).



LEATHER

GENUINE LEATHER IS AN EXTREMELY DURABLE MATERIAL OFFERING HIGH ELASTICITY, SOFTNESS AND LIGHTNESS. THIS FINE, NATURAL MATERIAL MAY DISPLAY MARKS AND VARIATIONS SUCH AS LINES AND WRINKLES, AND COLOR DIFFERENCES, ALL SIGNATURES THAT ENHANCE ITS BEAUTY AND EXCELLENCE.



WOOD

WOOD IS A NATURAL LIGHTWEIGHT AND DURABLE FIBER; IT IS A GOOD INSULATING MATERIAL THAT RETAINS MOISTURE. THE MAIN PHYSICAL PROPERTIES OF WOOD ARE DURABILITY, HARDNESS, STIFFNESS AND DENSITY. PURE WOOD IS A REFINED AND NATURAL PRODUCT TOTALLY REGENERABLE AND RECYCLABLE. MARKS, GRAINS AND COLOR VARIATIONS ARE DISTINCTIVE FEATURES THAT GUARANTEE ITS AUTHENTICITY.



ECONYL® REGENERATED NYLON AND STAINLESS STEEL AISI 316L

ECONYL® IS A 100% REGENERATED NYLON FROM WASTE SUCH AS FISHING NETS, OLD CARPETS DESTINED FOR LANDFILLS, PLASTIC COMPONENTS AND FABRIC SCRAPS FROM MILLS. AS WELL AS BEING A SOLUTION ON WASTE, ECONYL® REGENERATED NYLON IS ALSO BETTER WHEN IT COMES TO CLIMATE CHANGE. IT REDUCES THE GLOBAL WARMING IMPACT OF NYLON BY UP TO 90% COMPARED WITH THE MATERIAL FROM OIL.





316L STAINLESS STEEL
HARDWARE

PERCENTAGE OF PRE-CONSUMER AND
POST-CONSUMER FOR THE RECYCLED CONTENT

PRODUCTS FULLY RECYCLABLE
AT THE END OF THEIR LIFE



316L stainless steel products
have been designed and
produced to be fully
disassembled therefore
100% recyclable at the end
of their life.



LEED®
LEED GREEN BUILDING CERTIFICATION

316L stainless steel
products contribute
to LEED credits.

pba has fully inventoried
chemical ingredients to
100 ppm and assess each
substance against the
Authorization list - Annex
XIV, the Restriction list -
Annex XVII and the SVHC
candidate list, proving that
no such substance is
included.

RED LIST FREE DECLARE LABEL

316L stainless steel
products offer
Red List Free
Declare Label.



VOCs

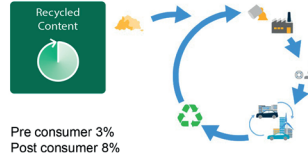
The 316L stainless steel products do not
include integral organic based surface coatings,
binders, or sealants.
Therefore products are inherently non emitting
sources of VOCs and are considered fully
compliant.



POLYAMIDE 6
HARDWARE

PERCENTAGE OF PRE-CONSUMER AND
POST-CONSUMER FOR THE RECYCLED CONTENT

PRODUCTS FULLY RECYCLABLE
AT THE END OF THEIR LIFE



Polyamide 6 products
have been designed and
produced to be fully
disassembled therefore
100% recyclable at the end
of their life.



LEED®
LEED GREEN BUILDING CERTIFICATION

Polyamide 6
products contribute
to LEED credits.

pba has fully inventoried
chemical ingredients to
100 ppm and assess each
substance against the
Authorization list - Annex
XIV, the Restriction list -
Annex XVII and the SVHC
candidate list, proving that
no such substance is
included.

CYTOTOXICITY

CYTOTOXICITY TEST



Cytotoxicity test to DIN EN ISO 10993-5



pba washroom accessories has been tested for
emission of volatile organic compounds (VOC)
using testing chamber method in accordance
with UNI EN ISO 16000-9:2006.

VOCs



ALUMINUM
HARDWARE

PERCENTAGE OF PRE-CONSUMER AND
POST-CONSUMER FOR THE RECYCLED CONTENT

PRODUCTS FULLY RECYCLABLE
AT THE END OF THEIR LIFE



Aluminum products
have been designed and
produced to be fully
disassembled therefore
100% recyclable at the end
of their life.



LEED

LEED®
LEED GREEN BUILDING CERTIFICATION

Aluminum products
contribute to LEED
credits.

REACH

pba has fully inventoried
chemical ingredients to
100 ppm and assess each
substance against the
Authorization list - Annex
XIV, the Restriction list -
Annex XVII and the SVHC
candidate list, proving that
no such substance is
included.

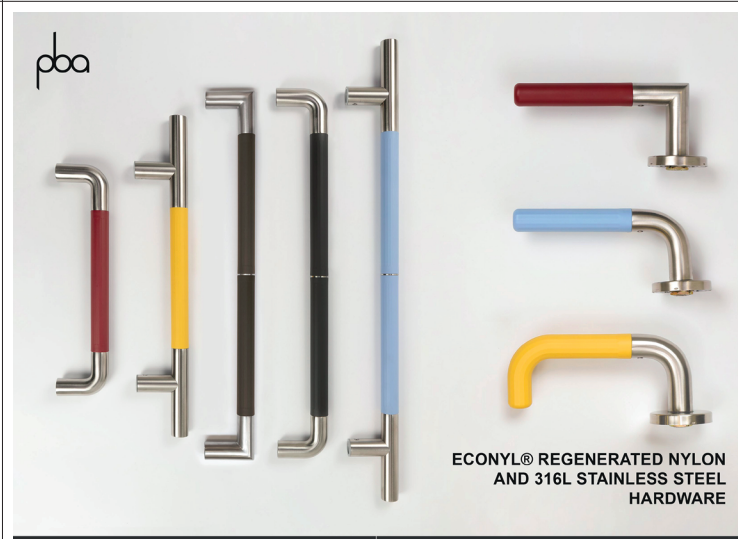
RED LIST FREE DECLARE LABEL

Aluminum
products offers
Red List Free
Declare Label.



VOCs

The Aluminum products do not include integral
organic based surface coatings, binders, or
sealants.
Therefore products are inherently non emitting
sources of VOCs and are considered fully
compliant.



ECONYL® REGENERATED NYLON
AND 316L STAINLESS STEEL
HARDWARE

PERCENTAGE OF PRE-CONSUMER AND
POST-CONSUMER FOR THE RECYCLED CONTENT

PRODUCTS FULLY RECYCLABLE
AT THE END OF THEIR LIFE



ECONYL® regenerated nylon
and 316L stainless steel
products are made of fully
recyclable 316L stainless steel
and fully regenerated and fully
recyclable ECONYL®.
Products can be completely
dismantled for recycling.



LEED

LEED®
LEED GREEN BUILDING CERTIFICATION

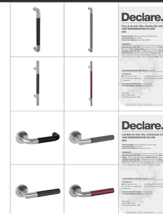
ECONYL®
regenerated nylon
and 316L stainless
steel products
contribute to LEED
credits.

REACH

pba has fully inventoried
chemical ingredients to
100 ppm and assess each
substance against the
Authorization list - Annex
XIV, the Restriction list -
Annex XVII and the SVHC
candidate list, proving that
no such substance is
included.

RED LIST FREE DECLARE LABEL

ECONYL® regenerated
nylon and 316L stainless
steel products offer
Red List Free Declare
Label.



VOCs

The ECONYL® regenerated nylon and 316L
stainless steel products do not include integral
organic based surface coatings, binders, or
sealants.
Products are non emitting sources of VOCs and
are considered fully compliant.

pba S.p.A. T +39 0424 5451 info@pba.it www.pba.it
pba USA, Inc. T +1 212 255 4605 office@pba-usa.us www.pba.it
pba Deutschland GmbH T +49 2151 82006 0 info@de.pba.it www.pba.it