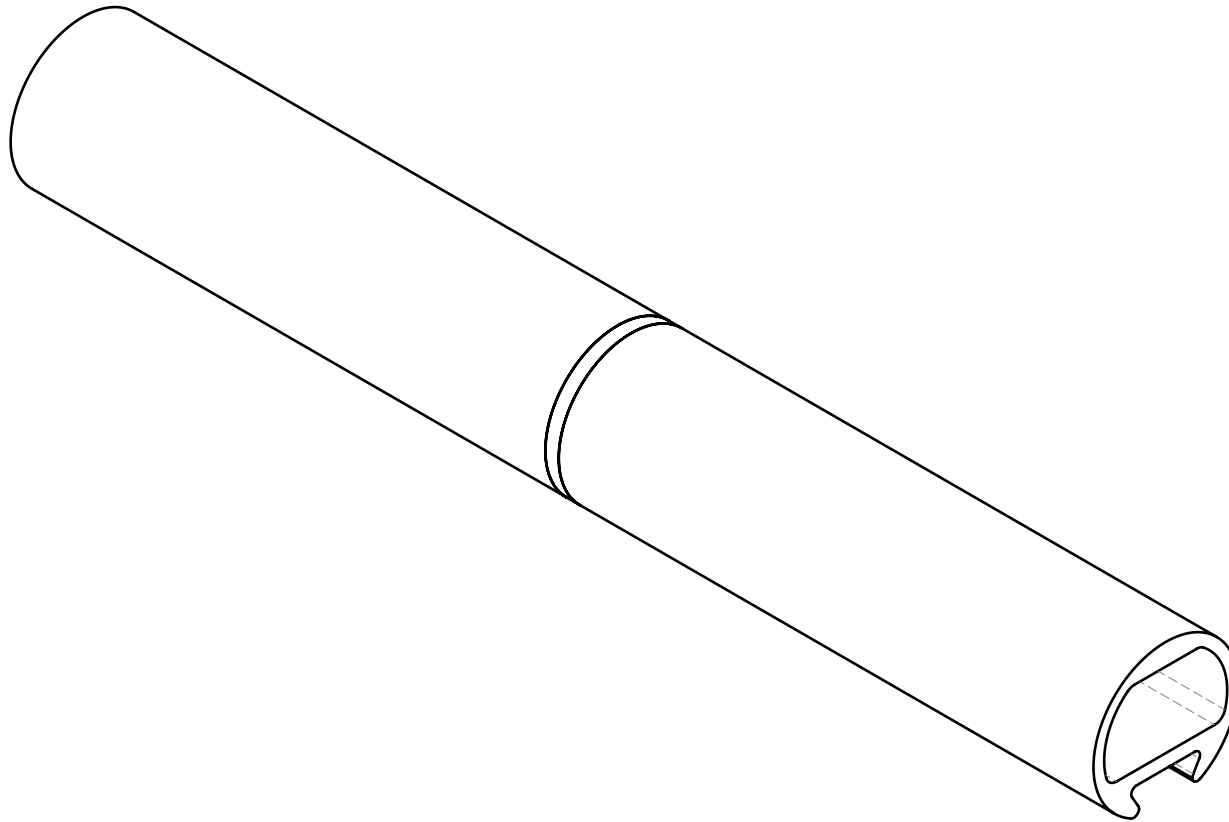


0 SHEET SCALE 1:1 2 4 inches

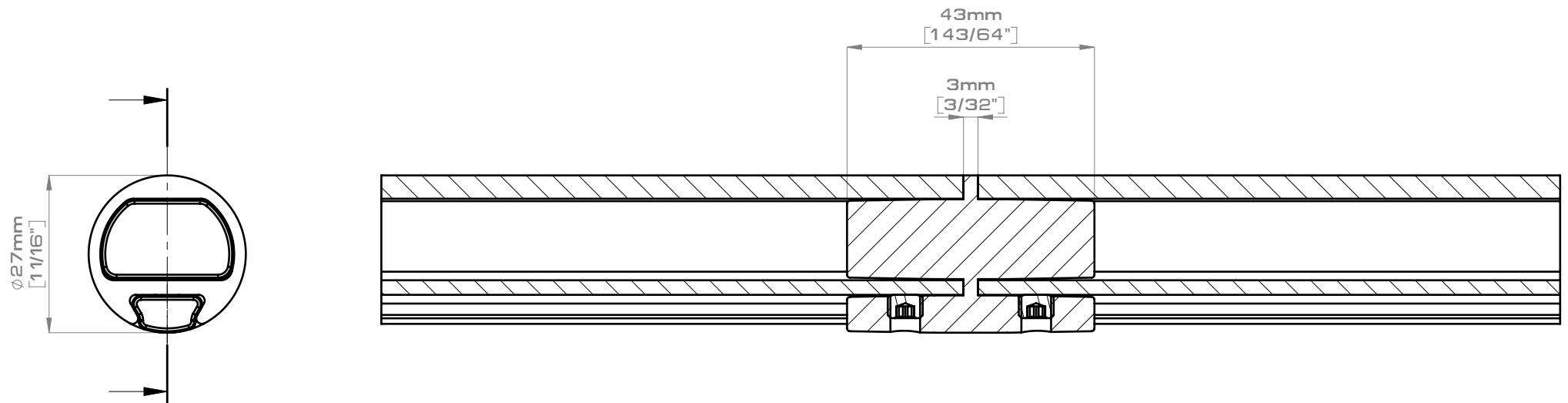


0 SHEET SCALE 1:1 50 100 mm

DRAWING SCALE 1:1
5CA.563.0000.62



pba



Elemento di connessione tubo-tubo
 Consiste in un perno metallico sul quale i due tubi si infilano
 e bloccano con le viti fornite.
 Finitura standard anodizzato argento.

Tube-tube connection element
 It consists of a metal pin on which the two tubes are inserted
 and lock with the supplied screws.
 Silver anodised standard finish.