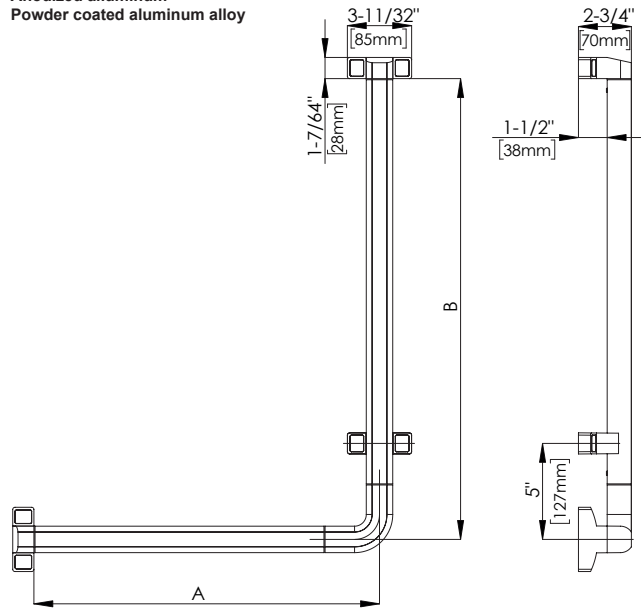


- ☐ Anodized aluminum
- ☐ Powder coated aluminum alloy



ITEM	◆	A	B
4CA.422.001U . xx . x		18"	24"
4CA.422.002U . xx . x		18"	36"
4CA.422.003U . xx . x		24"	24"
4CA.422.004U . xx . x		24"	36"
4CA.422.005U . xx . x		30"	24"
4CA.422.006U . xx . x		30"	30"
4CA.422.007U . xx . x		30"	36"



"L" SHAPED GRAB BAR

Rail 3/32" (2,5 mm) thick in EN AW-6060 aluminum extruded and anodized with 1-3/8" (Ø35 mm) outer diameter. Die-cast aluminum bends with cataphoresis pre-treatment and powder-coated finishing.

Wall support 3-11/32 x 1-7/64" (85 x 28 mm) rectangular base in zinc alloy with cataphoresis pre-treatment and powder-coated finishing.

Fully recyclable polyamide-6 caps which snap over fixing holes to conceal mounting screws.

Clearance between the grab bar and wall is 1-1/2" (38 mm).



Strength. PBA 4CA 90° grab bars can support loads up to 992 pounds (450 kg) if properly installed.

Complying with accessible design for structural strength (including ADA Accessibility Guidelines - ADAAG - in the U.S.A.), a grab bar can support loads in excess of 250 pounds (113 kg) if properly installed.

MOUNTING KITS not included.

Optional mounting kit for concrete, natural stone, solid brick and hollow brick: KIT 4CN.0VM.0030.00.

Optional mounting kit for sheetrock wall and wooden plate: KIT 4CN.0VM.0032.00.

Optional mounting kit for toilet partition: KIT 4CN.0VM.0041.00.

One Mounting kit is required for each wall support.

SAFETY WARNING

Grab bars must be firmly secured to the anchors and the wall in order for them to support the weight they are designed for. Grab bars alone are not stronger than anchors and walls. In case the grab bar is not securely anchored to the wall, the building owner or maintenance personnel must remove it from service to avoid any accident or injury.

ALUMINUM

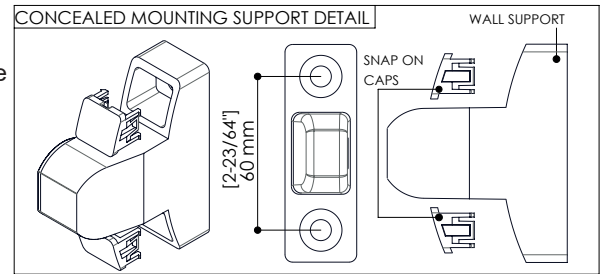
.XX FINISH	.78	.70	.79	.73

SUSTAINABILITY

This product contributes to LEED credit

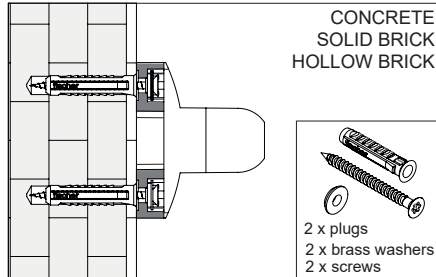
GRAB BAR INSTALLATION

Provide concealed anchor device or backing as specified or required in accordance with local building codes before wall is finished.
Fasten wall support to anchor device or backing with two screws in each support.
Concealed anchor devices and mounting screws are not included with PBA grab bars and must be specified as optional mounting kit.

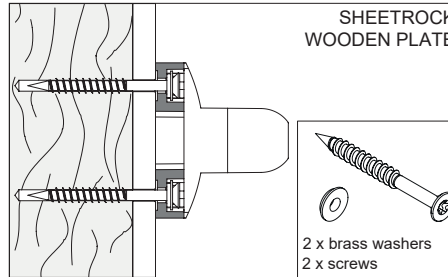


AVAILABLE MOUNTING KITS:

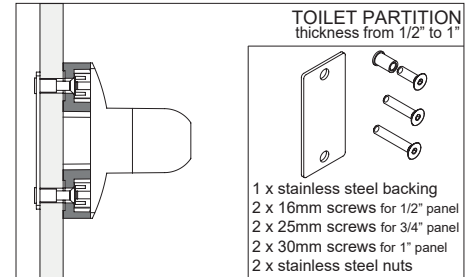
4CN.0VM.0030.00



4CN.0VM.0032.00

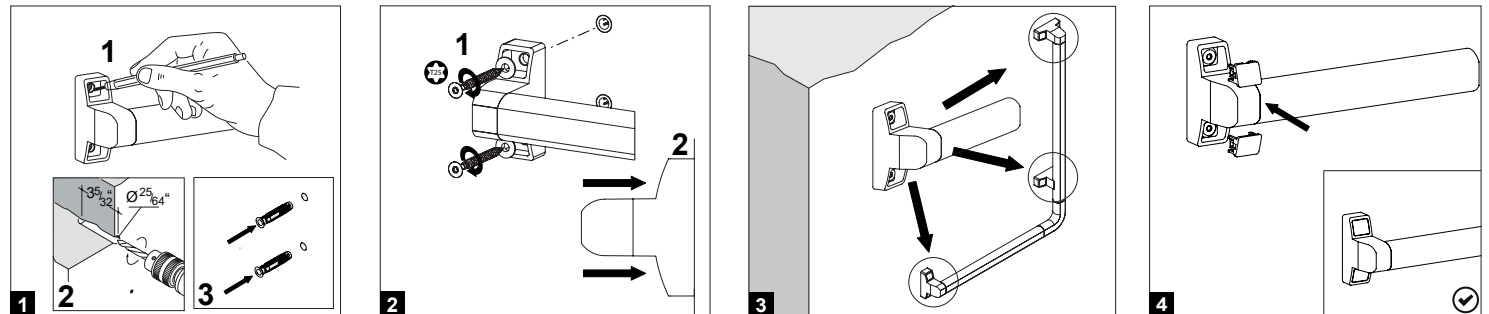


4CN.0VM.0041.00



INSTALLATION TO WALL WITH PBA KIT 4CN.0VM.0030.00

Place grab bar in desired mounting location. Use wall supports as a template to mark location of mounting screws. Mark screw location for each wall support and remove grab bar from wall. Drill $\varnothing 25/64"$ (10 mm) and insert plugs. Place grab bar and drive mounting screws with brass washers into plugs and secure tightly. Press all snap-over caps into place to conceal mounting screws.



INSTALLATION TO WALL WITH PBA KIT 4CN.0VM.0032.00

Place grab bar in desired mounting location. Drive mounting screws with brass washers in each wall support and secure tightly. Press all snap-over caps into place to conceal mounting screws.

INSTALLATION ON TOILET PARTITION WITH PBA 4CN.0VM.0041.00

Using grab bar as a template and stainless steel backing to find holes position, mark toilet partition panel. Drill $\varnothing 5/16"$ (8 mm) holes for connectors. Insert connectors through backplate and into holes in panel. Secure grab bar to connectors using screws furnished by manufacturer. Press all snap-over caps into place to conceal mounting screws.

CLEANING AND MAINTENANCE

DO NOT USE abrasive liquid detergents

