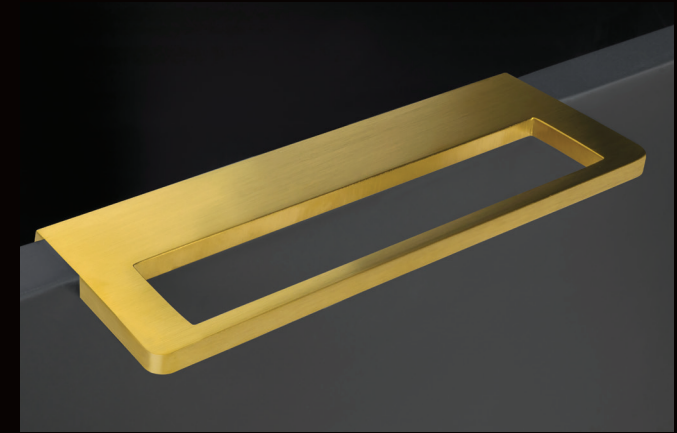
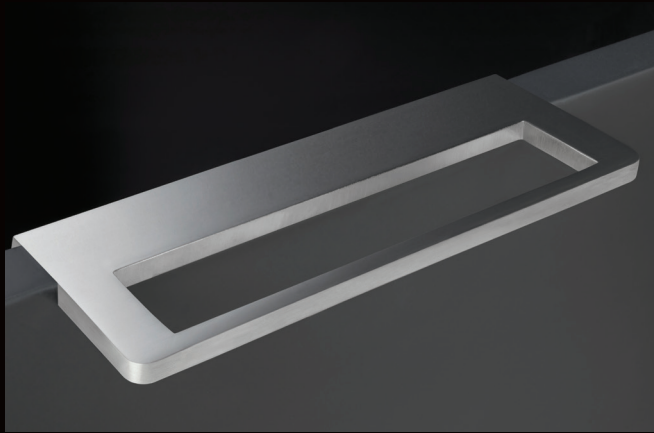




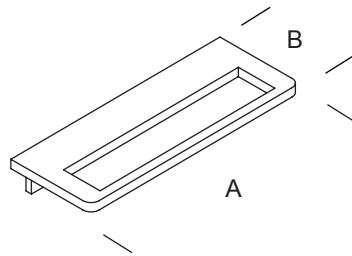
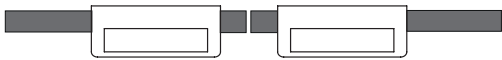
LEED®

Design 3R

EVERYONE MILLWORK PULLS

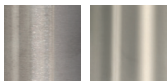


Design 3R



FINISHES .XX

STAINLESS STEEL

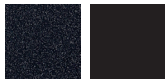


Satin .44
Bright* .43

STAINLESS STEEL POWDER COATED



White .31
Champagne .38
Bronze .39



Grey .32
Black .40

STAINLESS STEEL POWDER COATED AMC



Transparent Satin .99
Transparent Bright .99
Black .99
Bronze .99

COPPER PLATED WITHOUT COATING



Semi-Bright .58

Black burnished steel fixing screws
Copper plated finish can vary significantly from batch to batch

STAINLESS STEEL PVD GOLD



Satin .80

Black or white burnished steel fixing screws

ART.	A	B
GMP.D3R.0005. xx	127 mm 5 in	58 mm 2 9/32"
GMP.D3R.0006. xx	152,4 mm 6 in	58 mm 2 9/32"
GMP.D3R.0007. xx	177,8 mm 7 in	58 mm 2 9/32"
GMP.D3R.0008. xx	203,2 mm 8 in	58 mm 2 9/32"
GMP.D3R.0009. xx	228,6 mm 9 in	58 mm 2 9/32"
GMP.D3R.0010. xx	254 mm 10 in	58 mm 2 9/32"
GMP.D3R.0011. xx	279,4 mm 11 in	58 mm 2 9/32"
GMP.D3R.0012. xx	304,8 mm 12 in	58 mm 2 9/32"

* Stainless Steel Bright finish has a Satin inner profile

Everyone Millwork Pulls shall not be used on appliance doors when the appliance is firmly connected to the door.

Hardwood or medium-density fiberboard (MDF) substrates are recommended when Design 2, Design 2R, Design 3, Design 3R and Design 4 pulls are used. Lesser grade materials, such as particle board, could affect connection strength.